

CYTO SYSTEM

Cytological preparations –
safe and economic



HETTICH CYTO SYSTEM

— Cytological preparations – safe and economic

Rising demands on security or flexibility as well as time and cost pressures represent a large challenge for today's cytology laboratory. Hettich's three cyto systems are available to tackle these challenges. Reliable, flexible and cost-saving solutions – all IvD-compliant according to EU Directive 98/79/EC.

SYSTEM 1

System 1 is particularly suitable for a high sample throughput thanks to its 12-place rotor. In addition, the autoclavable swing-out rotor with a TÜV certified, bioseal rotor lid provides maximum safety. This system can be used in two proven Hettich benchtop centrifuges, offers comprehensive accessories and is very easy to handle. The end result is an optimal cell presentation.



Benefits:

- Closed, autoclavable rotor with Bio-Seal lid
- 12-place swing-out rotor for maximum sample throughput
- Large selection of cytochambers for single and multiple use. Re-usable cytochambers are autoclavable
- Easy handling
- Good cell representation

SYSTEM 2

This system offers you the highest possible flexibility. On the one hand, volumes between 1 and 8 ml can be prepared while up to 8 cell sediments can fit on a single slide. In addition, this accessory can be used in many Hettich centrifuges, often without rotor replacement. This accessory is inexpensive and is characterized by a high, representative cell yield.



Benefits:

- Large variety of accessories
- Flexible sample volumes
- Can be used with and without filter cards, depending on application and requirements.
- Very high cell yield

SYSTEM 3

System 3 combines the easy handling of System 1 with the flexibility and price advantage of System 2. It can operate in a variety of Hettich centrifuges and, like System 1, requires only a single centrifugation step to arrive at a dry cell pellet. The three different sediment size options give a distinct advantage.



Benefits:

- Easy handling
- Ideal for small sample volumes
- Can be used with and without filter cards, depending on application and requirements. (Dry or moist cell sediment)

— Assembly of a complete cyto insert

System 1

cyto chamber with filter card

Clips

swing-out rotor, 12-place

BESTSELLER

System 2

lid

clamping ring

cyto chamber, 1 ml

Slide carrier with filter card

bucket

System 3

lid

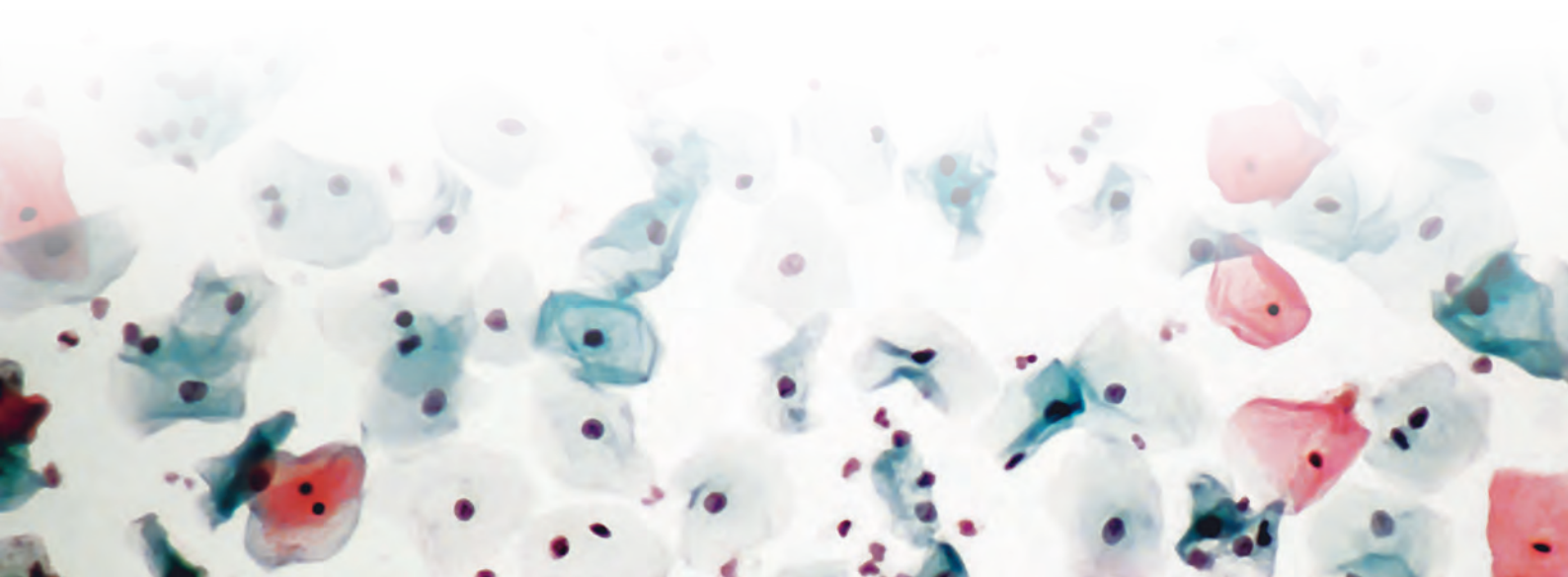
cyto chamber

Slide carrier with filter card and clamping ring

bucket

— Your combination possibilities

	System 1	System 2	System 3
ROTOFIX 32 A	•	•	•
UNIVERSAL 320 320 R	•	•	•
ROTINA 380 380 R		•	•
ROTINA 420 420 R		•	
ROTANTA 460 460 R		•	
ROTIXA 500 RS		•	



SYSTEM 1 – ROTOR AND ACCESSORIES

— Swing-out rotor

Swing-out rotor, 12-place
For ROTOFIX 32A |
UNIVERSAL 320 / 320 R



max. RPM max. RCF	2.000 min ⁻¹ 438
max. capacity	12 cyto chambers
run-up run-down, braked in sec	19 18
Angle	90°
Cat. No.	1515-A



Lid bioseal⁵⁾



Cat. No. **INCLUSIVE**



Stand

Cat. No. **1528**



— Cyto chambers

Cyto chambers
(disposable)



capacity in ml	0.5	0.2
area in mm ²	28.3	28.3
Ø in mm	6	6
Cat. No.	1531 (50 pcs.) 1534 (500 pcs.)	1532 (50 pcs.)



Clips
(autoclavable)



Cat. No. **1524 (4 pcs.)** **1524 (4 pcs.)**



Filter cards



Cat. No. **filter card white (inclusive)** **filter card brown (inclusive)**

Cyto chambers
(re-usable, autoclavable)



capacity in ml	0.5	6 ¹⁸⁾
area in mm ² / (L x W) in mm	28.3	13.4 x 22
Ø in mm	6	-
Cat. No.	1538 (12 pcs.)	1536 (12 pcs.)



Clips
(autoclavable)



Cat. No. **1524 (4 pcs.)** **1524 (4 pcs.)**



Filter cards / seals



Cat. No. **1539 (200 pcs.)** **1537 (100 pcs.)**

⁵⁾ Tested by the TÜV in conformity with DIN EN 61010, section 2 - 020.

¹⁸⁾ This is the maximum capacity. The recommended quantity to be used per chamber is 4 ml.



SYSTEM 2 – ROTOR AND ACCESSORIES

— Swing-out rotors

Swing-out rotor, 4-place For ROTOFIX 32A | UNIVERSAL 320 / 320R



max. RPM max. RCF	4,000 min ⁻¹ 2,451
max. capacity	8 cyto chambers
run-up run-down, braked in sec	22 25
angle	90°
Cat. No.	1624



Bucket



lid	1661
Cat. No.	1660



Swing-out rotor, 4-place For UNIVERSAL 320 / 320R



max. RPM max. RCF	5,000 min ⁻¹ 2,879
max. capacity	8 cyto chambers
run-up run-down, braked in sec	30 32
angle temperature in °C ¹⁾	90° -10
Cat. No.	1494



Bucket



Cat. No.	1452
-----------------	-------------



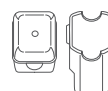
Swing-out rotor, 4-place For ROTINA 380 / 380R



max. RPM max. RCF	4,000 min ⁻¹ 2,898
max. capacity	16 cyto chambers
run-up run-down, braked in sec	24 17
angle temperature in °C ¹⁾	90° -8
Cat. No.	1798



Bucket



lid	5053
Cat. No.	5051

Adapter



Cat. No.	5280
-----------------	-------------



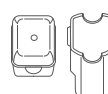
Swing-out rotor, 4-place For ROTINA 420 / 420R



max. RPM max. RCF	4,000 min ⁻¹ 2,898
max. capacity	16 cyto chambers
run-up run-down, braked in sec	18 16
angle temperature in °C ¹⁾	90° -1
Cat. No.	4753



Bucket



lid	5053
Cat. No.	5051

Adapter



Cat. No.	5280
-----------------	-------------



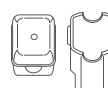
Swing-out rotor, 4-place For ROTANTA 460 / 460R / 460 RC / 460 RF



max. RPM max. RCF	4,000 min ⁻¹ 3,095
max. capacity	16 cyto chambers
run-up run-down, braked in sec	40 45
angle	90°
Cat. No.	5694



Bucket



lid	5053
Cat. No.	5051

Adapter



Cat. No.	5280
-----------------	-------------



1 For cooled versions: Lowest temperature achievable with precooling and max. speed.

— Swing-out rotors

Swing-out rotor, 4-place For ROTANTA 460 / 460 R / 460 RC / 460 RF



max. RPM max. RCF	4,600 min ⁻¹ 4,069
max. capacity	16 cyto chambers
run-up run-down, braked in sec	75 88
angle temperature in °C ¹⁾	90° +10

Cat. No. 5699-R



Bucket

Cat. No.



5628

Bucket

Cat. No.



5220-A

Adapter

Cat. No.



5280



Swing-out rotor, 6-place For ROTOFIX 32 A | UNIVERSAL 320 / 320 R



max. RPM max. RCF	4,000 min ⁻¹ 2,039
max. capacity	12 cyto chambers
run-up run-down, braked in sec	22 25
angle	90°

Cat. No. 1626



Bucket

lid

Cat. No.



1661

1660



Swing-out rotor, 6-place Passend für ROTINA 380 / 380 R



max. RPM max. RCF	4,000 min ⁻¹ 2,003
max. capacity	12 cyto chambers
run-up run-down, braked in sec	19 18
angle temperature in °C ¹⁾	90° -6

Cat. No. 1726



Bucket

lid

Cat. No.



1661

1660



Swing-out rotor, 6-place For ROTANTA 460 | 460 R | 460 RC | 460 RF



max. RPM max. RCF	4,000 min ⁻¹ 3,291
max. capacity	24 cyto chambers
run-up run-down, braked in sec	38 46
angle temperature in °C ¹⁾	90° 0

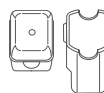
Cat. No. 4446



Bucket

lid

Cat. No.



5053

5051

Adapter

Cat. No.



5280



Swing-out rotor, 6-place For ROTIXA 500 RS



max. RPM max. RCF	4,000 min ⁻¹ 3,274
max. capacity	24 cyto chambers
run-up run-down, braked in sec	33 50
angle temperature in °C ¹⁾	90° 0

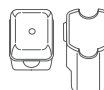
Cat. No. 4296



Bucket

lid

Cat. No.



5053

5051

Adapter

Cat. No.



5280



¹ For cooled versions: Lowest temperature achievable with precooling and max. speed.

— Cyto chambers

Cyto chambers						
capacity in ml	1	2	4	8	3 x 2	4 x 1
area in mm ²	30	60	120	240	3 x 60	4 x 30
Ø in mm	6.2	8.7	12.4	17.5	3x8.7	4x6.2
Cat. No.	1663 (100 pcs.)	1664 (100 pcs.)	1665 (100 pcs.)	1666 (100 pcs.)	1667 (100 pcs.)	1668 (100 pcs.)
+	Slide carrier with ring	Slide carrier for two chambers	Slide carrier with ring	Slide carrier for two chambers	Slide carrier with ring	Slide carrier for two chambers
Slide carrier (autoclavable)						
Cat. No.	1662	1670	1662	1670	1662	1670
+						
Filter cards for 1662						
Cat. No.	1675 (200 pcs.)	1675 (200 pcs.)	1675 (200 pcs.)	1676 (100 pcs.)	1677 (100 pcs.)	1678 (100 pcs.)
+						
Filter cards for 1670						
Cat. No.	1692 (200 pcs.)	1692 (200 pcs.)	1692 (200 pcs.)	1691 (100 pcs.)	1694 (100 pcs.)	1693 (100 pcs.)



SYSTEM 3 – ROTOR AND ACCESSORIES

— Swing-out rotors

Swing-out rotor, 4-place For ROTOFIX 32 A | UNIVERSAL 320 / 320R



max. RPM max. RCF	4,000 min ⁻¹ 1,467
max. capacity	4 cyto chambers
run-up run-down, braked in sec	20 25
angle	90°
Cat. No.	1624



Bucket



lid	inclusive
Cat. No.	1680



Swing-out rotor, 6-place For ROTOFIX 32 A | UNIVERSAL 320 / 320R



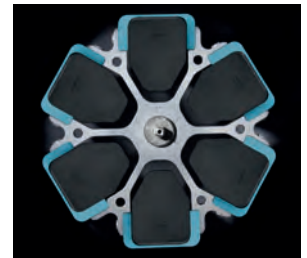
max. RPM max. RCF	5,000 min ⁻¹ 1,842
max. capacity	6 cyto chambers
run-up run-down, braked in sec	20 22
angle	90°
Cat. No.	1626



Bucket



lid	inclusive
Cat. No.	1680



— Cyto chambers

Cyto chambers

area in mm ²	30	60	120
Ø in mm	6.2	8.7	12.4
Cat. No.	1671 (100 pcs.)	1672 (100 pcs.)	1673 (100 pcs.)



Slide carrier (autoclavable)



Cat. No.	1662	1662	1662
-----------------	-------------	-------------	-------------



Filter cards



Cat. No.	1696 (100 pcs.)	1697 (100 pcs.)	1698 (100 pcs.)
-----------------	------------------------	------------------------	------------------------



Hettich centrifuges, incubators and accessories fulfill all applicable EC directives that apply to you. Every work step is subject to strict controls and documentation. The company is ISO 9001, ISO 13485 and ISO 14001 certified. Hettich products are manufactured with care and responsibility, giving them a worldwide reputation for safety and reliability.